



# Significance

CHANGING THE WORLD THROUGH CHARITABLE GIFT PLANNING



## Wes Lingren: A lifetime of impact



Not many people can say that their former chemistry professor is also in the Falcon Legends Hall of Fame. Uniquely positioned in academics and athletics, Dr. Wes Lingren '52 brought his gifts and talents to Seattle Pacific College on the basketball and tennis courts as a talented player and later as a beloved chemistry professor, dedicated coach, and advocate for collegiate athletics.

Lingren's story with Seattle Pacific began in 1949 when he was recruited to play basketball. He was encouraged to go to college by his father, who owned a construction business in Lingren's hometown of Pasadena, Calif. He had a lot of friends from high school who went to SPC and they had great things to say about the college, so the opportunity to play basketball on a scholarship at a well-respected Christian institution felt like an answered prayer.

"My college experience was wonderful — I had no idea what I was getting myself into," Lingren said. He quickly made a place — or several — for himself at Seattle Pacific, balancing his athletic talents

CONTINUED NEXT PAGE

## A SEASON OF CHANGE



It would be an understatement to say that we are facing many changes in our country right now. Seattle Pacific has also been experiencing changes. Not only has the size of our student body decreased (in part

due to the population decline in 18-year-olds across the country), but we're also currently working on realigning our majors to better meet the needs and interests of our students, while working within the University's reduced budget.

Another change is the way in which the University sends out *Significance*. Since the spring of 2007, *Significance* has been printed and mailed twice each year, highlighting stories of SPU donors who have included the University in their will, trust, or retirement plans, or have established an endowment to help future generations of students. We have also included stories of students who are able to attend SPU in part because they are receiving an endowed scholarship. We hope that these stories will inspire others to consider including the University in their own estate and financial plans.

This coming spring, we plan to try something new by sending a digital version of *Significance*. This will allow us to reach more people, provide greater flexibility in delivering the same interesting content, and remain budget-conscious. Let us know what you think about this new format!

If you are already receiving emails from the University, watch your inbox for this new digital format of the newsletter. However, if you are not receiving emails from SPU and you would like to receive this digital version of *Significance*, please email me at [msandlin@spu.edu](mailto:msandlin@spu.edu).

*Marlon Sandlin*

Marlon Sandlin  
Interim Director of Endowments  
and Gift Planning  
[msandlin@spu.edu](mailto:msandlin@spu.edu) | 206-281-2631

CONTINUED FROM COVER

between basketball in the winter and tennis in the spring.

He studied chemistry, developing close relationships with his professors. That is ... singular professor, as there was only one in the entire chemistry department at the time.

Lingren graduated from Seattle Pacific in 1952, then completed a fellowship at the University of Washington and two years in the army before a friend inspired him to start teaching chemistry at Pasadena Nazarene College. After a few years, he returned to Seattle and Seattle Pacific — the chemistry department doubled once Lingren began teaching in the department.

Many faculty at the time both taught and coached sports, so it was inevitable that Lingren would too. When he was asked to coach tennis, he accepted the position as “he thought it would be nice to be outside in the springtime.”

“It turned out to be a wonderful chapter in my life,” said Lingren.

The University was impacted by a phenomenon of a shrinking male population at Christian colleges all over the country at the time, so Lingren became passionate about recruiting men to join the tennis team. He ultimately nurtured the talents of two nationally ranked tennis teams within his last coaching years at Seattle Pacific.

After years of investing his passion into the athletic department, he became a respected and trusted leader.

“I saw the need to ‘spruce up’ the athletic department.” And spruce it up he did. As the interim athletic director for one year and NCAA faculty representative for 25 years, he supported initiatives to add women’s varsity teams to the Falcon sports community and brought forth the case for upgrading and expanding athletics facilities.

As a professor, Lingren laid out a firm — and new — foundation for Seattle Pacific’s

academics. In 1970, he founded the University Scholars program after attending a higher education conference and noticing the importance of honors programs at other universities. He succeeded amidst financial restrictions and initial challenges in forming the curriculum, setting a precedent for academic excellence that has persisted beyond his departure from Seattle Pacific.

Lingren formally retired from SPU in 1998 and was honored to join the Emeriti Faculty. In 2006, he was inducted into the Falcon Hall of Fame for his legacy in improving the athletics department.

Lingren has maintained a close relationship with the Seattle Pacific community beyond the conclusion of his teaching and athletic career. He poured time and love into writing a book with his colleagues and friends titled, *Go Birds!: A Concise History of Varsity Athletics at Seattle Pacific University 1933–2017*. This book, consisting of archival pictures and information, chronicles how Seattle Pacific sports changed over the years.

Now, at the age of 94 and several years into enjoying his retirement, Lingren continues to positively impact the SPU community. He contributes to two endowments: one benefiting students studying pre-med and the other benefitting the University Scholars program.

He recently set up his own endowment and has appointed Seattle Pacific University as a beneficiary of his retirement plan once he passes away. This endowment will prioritize revitalizing the Falcon Legends Hall of Fame luncheon, an essential fundraising event for the athletic department. It will also benefit students in financial need who are looking to continue their athletic careers at Seattle Pacific.

These days, Lingren enjoys his retirement in Bellevue, Wash., where he loves spending time with friends. He and his late wife Marilyn have two children, Libby and Eric, who are both SPU alumni with kids of their own.

Growing up, Jean lived in proximity to the campus, first on Cremona Street, and then on



Lingren keeps himself out of trouble by cross-stitching. He's completed more than 50 projects — many given as gifts.

## PHILANTHROPY SPOTLIGHT



Jean (Glancy) Porter:

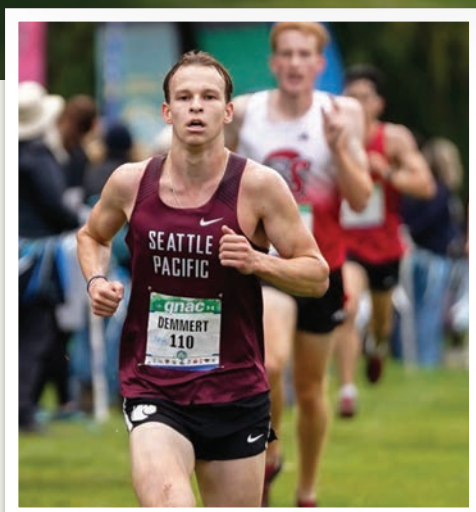
**Following  
in her  
father's  
footsteps**



Jean (Glancy) Porter was destined to attend Seattle Pacific College. Not only did her parents, Roy and Ruth Glancy, attend high school at Seattle Pacific, many of her aunts and uncles attended as well. And then there was her older sister, Joyce (Glancy) Gazaway, who enrolled at SPC ahead of her.

Growing up, Jean lived in proximity to the campus, first on Cremona Street, and then on

# Silas Demmert: Racing toward a better future



“

You get the best out  
of students when you  
allow them to only  
focus on being  
a student.”

— SILAS DEMMERT '27  
ECOLOGY MAJOR

## Disciplined and determined: there are many markers of

an athlete, but these are the ones that have driven Seattle Pacific University cross country and track and field runner Silas Demmert '27 to success throughout his athletic and academic journey.

Born and raised in Sitka, Alaska, his mom and dad are both educators and always encouraged Demmert and his brothers to pursue higher education. Demmert's love for running began when he joined cross country and later track and field during his sophomore year of high school. He enjoyed the community aspect of the teams and thrived as he challenged himself, which then strengthened his work ethic. His senior year of high school, SPU coaches recruited him for a visit, which put the University on his radar.

Demmert was initially offered an SPU scholarship that would reduce his tuition costs significantly. He then received a letter in the mail inviting him to apply for Seattle Pacific's Distinguished Scholar Award — an invitation-only scholarship competition.

His parents encouraged him to apply and put himself out there to see what would happen. To Demmert's surprise, he was one of five students awarded a full-tuition scholarship.

He expresses gratitude for the financial gifts he has received and recognizes all forms of scholarships as instrumental to his success as a student and athlete.

“I'm not worried about the next bills that I'm going to pay, and instead, I can really focus on managing my time and maybe other possible stressors and ensuring that I can be the best student and athlete I can be on any given day,” Demmert said. He added, “You get the best out of students when you allow them to only focus on being a student.”

As a freshman at SPU, Demmert ran with flying colors, scoring in cross country and achieving personal bests in both indoor and outdoor track races.

Demmert is now in his second year studying ecology, which was inspired by his love for hunting and fishing with his father. “[The decision to study ecology] came from my dad. I feel like he really made a point to us to get outside and have respect for our environment and the land we live on, which is a part of our culture on my dad's side,” he explained.

Demmert also enjoys challenging himself in academics and has forged meaningful relationships with several professors. “It feels like you get a lot of attention here that you're not even expecting. And then if you seek that attention out even more, you're going to get more help and care from your academic advisors and professors,” Demmert said.

After graduating from SPU, Demmert hopes that his work in ecology and passion for sustainability and climate action will serve the world around him, making an impact that benefits generations beyond his own.

He said, “I want to be able to say that I had enough respect to work hard and do my best to give back so that maybe my kids can have the same things I got, if not more. And hopefully generations before me can see that my generation really cares about this too.”

Third Avenue West, adjacent to Queen Anne Bowl. Roy Glancy was an avid Falcon fan and passed this passion along to Jean. In addition to attending Falcon basketball games in Royal Brougham Pavilion, Jean would watch Ken Foreman's track team and Dale Parker's batsmen compete virtually in her back yard. Later, her brother, John, would join the Falcon track and basketball teams, keeping

her “Bird-watching” interests alive.

Following her graduation from SPC in 1961, Jean began her teaching career in the Seattle School District at Concord Elementary. Later, she moved to Bellevue with her husband, Gary Porter, and began a decades-long tenure at Fall City Elementary. But her ties to Seattle Pacific, particularly the athletic programs, remained strong. So, following her passing in

2021, it wasn't surprising to learn that Jean had included a generous gift in her will to the Roy A. Glancy Athletic Endowment, established in 1987. Throughout the years, this endowment has provided scholarships for 43 Falcon athletes in basketball, and track and field. Thanks to Jean and other faithful donors, SPU student-athletes are continuing to receive the financial support they need to excel.

**NATIONALLY RANKED** — Seattle Pacific continues to be recognized as a “Best National University” by *U.S. News & World Report*.



## Using retirement assets in support of SPU

As our feature article on Wes Lingren highlights, retirement assets can be used to provide a meaningful future gift to Seattle Pacific. It is a simple and affordable way of supporting students and important programs at the University. You can continue to use your retirement account for your own income needs during your lifetime and then leave it to us when you pass away. While remembering SPU in your will involves the cost and time delay of probate, remembering the University as a beneficiary of your retirement plan provides us with an immediate gift.

**Did you know that 60–70% of your retirement assets may be taxed if you leave them to your heirs at your death?** Another option is to leave your heirs assets that receive a “step up in basis,” such as real estate and stock, and leave your retirement assets to Seattle Pacific University. As a tax-exempt charity, we are not taxed upon receiving an IRA or other retirement plan assets. We will benefit from the full value of your gift regardless of whether it represents all of your retirement plan or a percentage of it.

**So, how do you do this? It’s really quite easy! Here are some simple steps to follow:**

- 1** Contact your broker, mutual fund company, or other custodian of your retirement plan.
- 2** Ask them to send you a new beneficiary designation form. You may also be able to download this form from their website.
- 3** Complete this form naming Seattle Pacific University, Seattle, WA as beneficiary of your account and include the percentage you want to leave to us. If you also need to include our federal tax identification number, it is #91-0565553. Then return the form to your custodian.
- 4** Let us know that you have named SPU as a beneficiary of your retirement plan and if you have a particular desire as to how this future gift should be used (e.g. where most needed, student scholarships, endowment, etc).

Even after you complete the beneficiary designation form, you can continue to take distributions and other withdrawals from your account. You can also change your mind at any time in the future for any reason, including if you have a loved one who needs your financial help.

**If you have questions about remembering Seattle Pacific as a beneficiary of your retirement plan, please contact Marlon Sandlin at 206-281-2631 or msandlin@spu.edu.**

## Spotlight on athletic endowments

There are over 400 endowments at Seattle Pacific University providing much needed financial support to students and vital programs. Below is a list of just a few of our endowments that support students who are involved in our athletic programs.

**Roy Glancy Athletic Scholarship Endowment (est. 1987)** — for students participating in the Track and Field or Basketball programs

**Esther M. Helsel Women’s Soccer Charter Endowment (est. 2001)** — for the Women’s Soccer program or other women’s athletics

**Doris Heritage Cross Country and Track Scholarship Endowment (est. 1988)** — for students participating in the Cross Country and Track programs

**C. Clifford McCrath Scholarship Endowment (est. 2016)** — for students participating in the Men’s Soccer program

**SPU Crew Endowment (est. 1989)** — for support of the crew team with expenses relating to competitive events

**Harold Sternberg Athletic Scholarship Endowment (est. 1986)** — for students participating in athletics at SPU

**Daryl L. and Claudia J. Vander Pol Men’s Basketball Scholarship Endowment (est. 2019)** — for students participating in the Men’s Basketball program

**To learn more about creating an endowment for Athletics or another purpose at SPU, or contributing to any of these or other existing endowments, please contact the Office of Endowments and Gift Planning at [giftplanning@spu.edu](mailto:giftplanning@spu.edu) or 206-281-2631, or visit our website at [legacy.spu.edu](http://legacy.spu.edu).**



**Our free resources have everything you need to help you plan your legacy. Request copies at [spu.edu/estateresources](http://spu.edu/estateresources).**